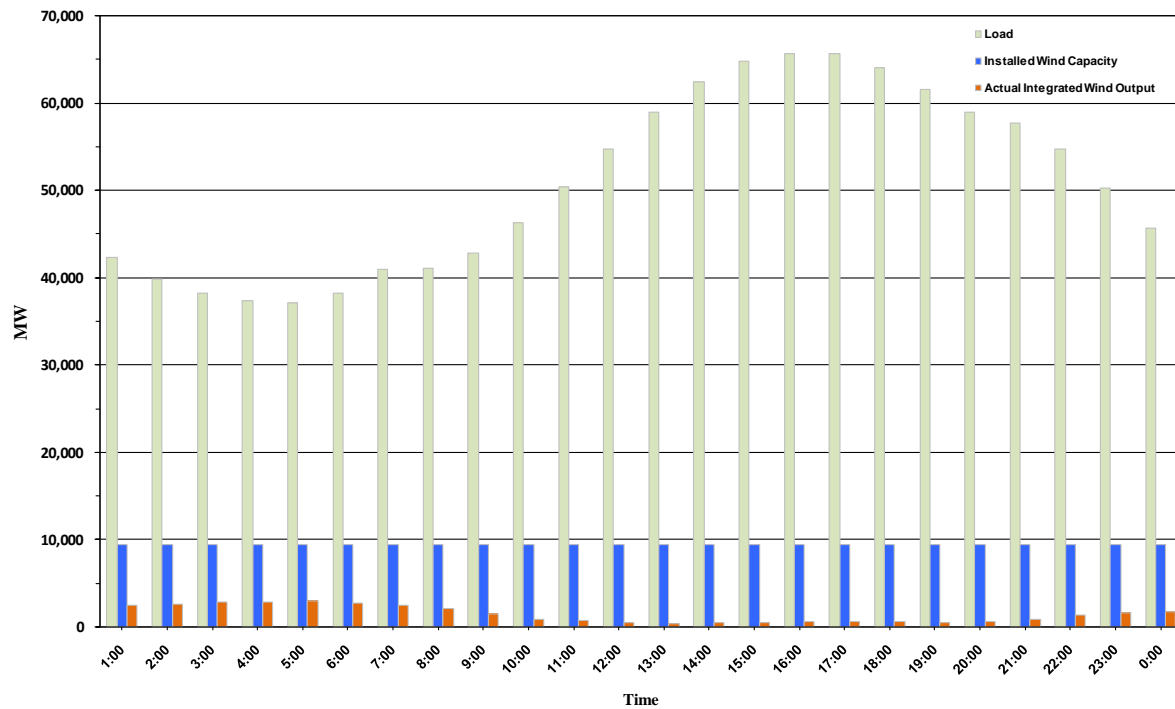




ERCOT Grid Operations Wind Penetration Report: 08/23/10

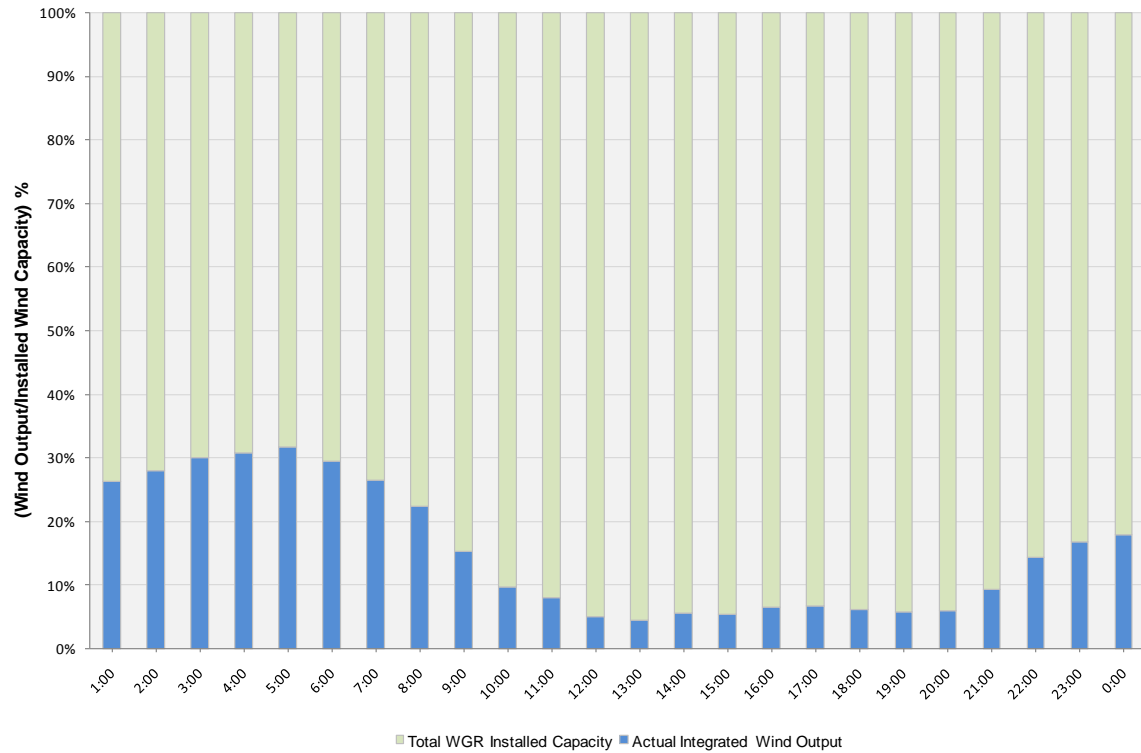
| | |
|----------------------|------------------|
| Peak Load | 65,716 MW |
| Load Peak Hour | 17 |
| Wind Record 06/12/10 | 7016 MW |
| Max Wind value | 3027 MW |
| Wind Peak Hour | 04:18:12 |
| Wind Penetration % | 8.16 |

Hourly Average Actual Load vs. Actual Wind Output
08-23-2010

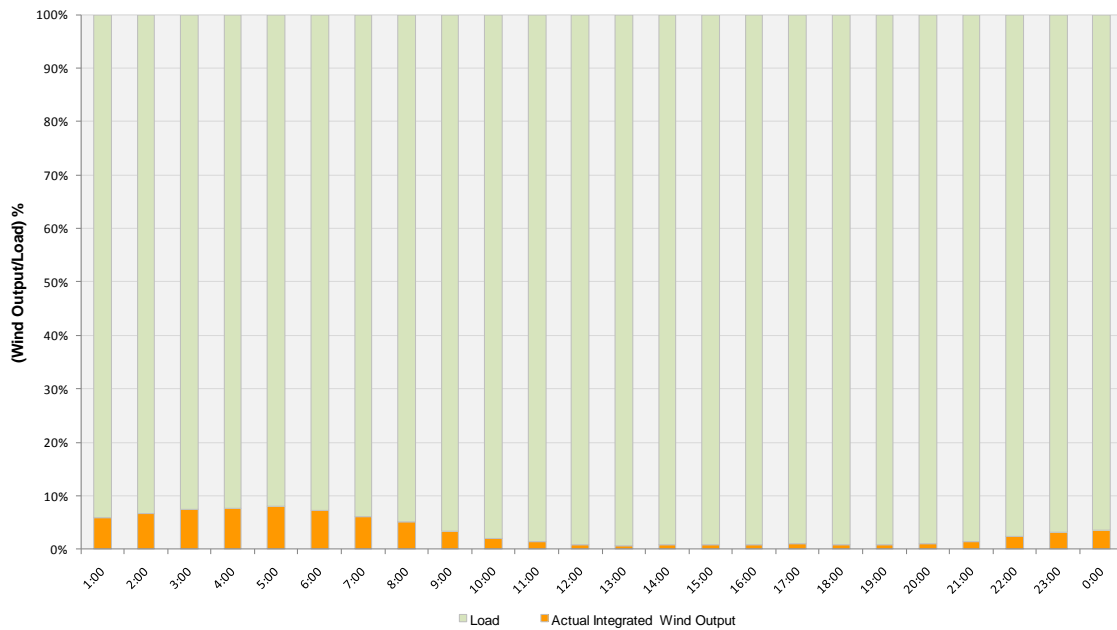




Actual Wind Output as a Percentage of the Total Installed Wind Capacity
08-23-2010



Actual Wind Output as a Percentage of the ERCOT Load
08-23-2010





ERCOT Load vs. Actual Wind Output 08/16/10 - 08/23/10

